

WELCOME TO BANYAN TREE

SANCTUARY FOR THE SENSES

Banyan Tree Club & Spa Seoul



BANYAN TREE
CLUB & SPA SEOUL

BANYANTREE.COM

WELCOME TO BANYAN TREE

Located in the tranquil Namsan district – 1-hour drive from Incheon International Airport and just 10 minutes from downtown Seoul – overlooking Seoul's picturesque Mountain Namsan, Banyan Tree Club & Spa Seoul is Banyan Tree's first urban resort hotel in Korea. This urban oasis offers guests a chance to escape the city's fast pace, and to relax with family and friends amidst a serene and lush environment.

Facilities

The Oasis | Fitness Centre | Indoor Swimming Pool | Sauna | Kids Club | Troon Golf | Tennis Court | Futsal Field | Basketball Court | Banyan Tree Spa & Gallery

Dining Facilities

Granum Dining Lounge | The Club Member's Restaurant | Festa Dining | Oasis Outdoor Kitchen | Moon Bar

Banquet & Wedding

Crystal Ballroom | Boardroom | Namsan Terrace & Celeste | Festa Hall

1-hour drive from Incheon International Airport

● Banyan Tree Club & Spa Seoul ✈ Airport

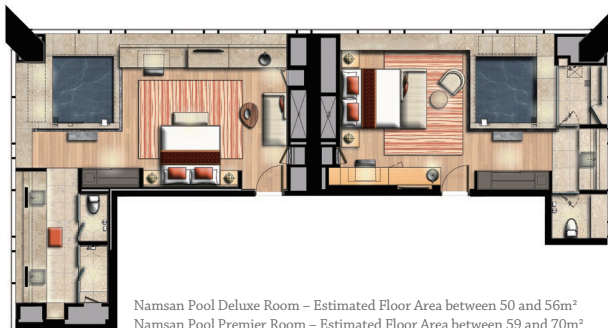


THE HOTEL



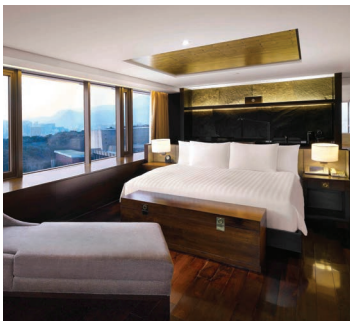
NAMSAN POOL DELUXE ROOM & NAMSAN POOL PREMIER ROOM

Namsan Pool Deluxe and Namsan Pool Premier Rooms range in size from 50 to 70 square meters. With only four rooms on each floor, guests are assured a private time in absolute quiet, surrounded by an understated interior décor that draws its beauty and comfort from the abundance of space. Seoul's stunning night views can be seen from the Relaxation Pools in each of the rooms, imparting an aura of mental and physical relaxation.



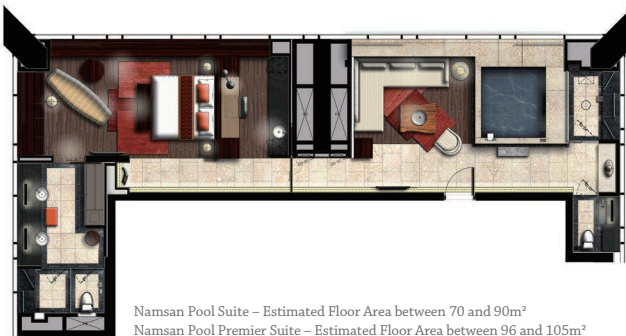
Namsan Pool Deluxe Room – Estimated Floor Area between 50 and 56m²
Namsan Pool Premier Room – Estimated Floor Area between 59 and 70m²

*All plans are not drawn to scale



NAMSAN POOL SUITE & NAMSAN POOL PREMIER SUITE

Namsan Pool Suites and Namsan Pool Premier Suites, boasting spacious 70 to 105 square meters, feature separate living rooms and bedrooms, allowing a more gracious stay. These suites offer some of the best views of Seoul, with the city's icons, Namsan Mountain and N Seoul Tower, looming large in each of the suites' expansive living room windows. The large comfortable bedroom and romantic Relaxation Pool further deepen the spiritual experience of our Suites. Enjoy a comfortable stay in a private suite limited to only two locations on each floor.



Namsan Pool Suite – Estimated Floor Area between 70 and 90m²
Namsan Pool Premier Suite – Estimated Floor Area between 96 and 105m²

*All plans are not drawn to scale



SPA SANCTUARY SUITE

Step out of the norm with a stay at Banyan Tree's Spa Sanctuary Suite and enjoy an endless stream of peace inspiring spa activities all day long. Stay in one of the two massive rooms occupying an entire floor and experience the ultimate in tranquility and relaxation through the complete portfolio of massages the hotel has to offer. The Spa Sanctuary Suites offer unlimited spa treatments during the Spa Sanctuary Suite experience includes in-room check-in with a welcome foot ritual and spa inspired turndown service.



Spa Sanctuary Suite – Estimated Floor Area between 70 and 90m²

*All plans are not drawn to scale



PRESIDENTIAL SUITE

Banyan Tree Seoul's Presidential Suites represent the ultimate in sophistication, space and luxury, with the best views in the house. Each offer 300 square meters of grandiose space in a duplex floor plan divided into two spaces, a common use area featuring a dining room, living room and Relaxation Pool, all with the most spectacular, panoramic views, and a living area dedicated to a bedroom with two spacious beds and a luxury ensuite bath. The Namsan Presidential Suite offers views of Mount Namsan and its surrounding forests, while the Banyan Presidential Suite offers views of the dynamic city of Seoul.



Presidential Suite – Estimated Floor Area between 279 and 315m²



*All plans are not drawn to scale

THE CLUB



BANYAN ROOM & BANYAN POOL DELUXE ROOM

There are 14 Banyan Rooms and Banyan Pool Deluxe Rooms located in the Club building, each with amazing views of the city. The Relaxation Pool in the Banyan Pool Deluxe Rooms perfectly complements the resting quarters, with a dramatic touch of resort luxury. The interior designs are steeped in nature, instilling a calming psychological comfort to your stay.



Banyan Room – Estimated Floor Area between 49 and 59m²



Banyan Pool Deluxe Room – Estimated Floor Area between 48 and 64m²

*All plans are not drawn to scale



BANYAN SUITE

Banyan Suites offer 77 square meters of expansive comfort, with a king sized bed and bathtub equipped bathrooms. The Banyan Suites, located on the 6th floor of the Club building, feature a spacious living area and a separate bedroom.



Banyan Suite – Estimated Floor Area between 76 and 77m²

*All plans are not drawn to scale

For reservations and enquiries, please contact

Banyan Tree Club & Spa Seoul

Jang Chung Dan-Ro 60, Jung-Gu,
Seoul 04605, Korea
Tel: +82 2 2250 8000
Fax: +82 2 2250 8009
clubandspa-seoul@banyantree.com

CORPORATE OFFICE

Banyan Tree Hotels and Resorts

Group Marketing Services
211 Upper Bukit Timah Road
Singapore 588182
Tel: +65 6849 5888
Fax: +65 6462 2800
corporate@banyantree.com

WORLDWIDE SALES

AMERICAS

United States – Los Angeles

Tel: +1 805 212 8148
sales-losangeles@banyantree.com

United States – New York

Tel: +1 917 213 0193
Fax: +1 718 889 2416
sales-newyork@banyantree.com

ASIA PACIFIC

Australia

Tel: +61 2 9411 5576
Fax: +61 2 9279 0780
sales-sydney@banyantree.com

China – Beijing

Tel: +86 10 8515 1828
Fax: +86 10 8587 0308
sales-beijing@banyantree.com

China – Chengdu

Tel: +86 28 6606 7133
sales-chengdu@banyantree.com

China – Guangzhou

Tel: +86 20 2826 1896
Fax: +86 20 2826 1897
sales-guangzhou@banyantree.com

China – Kunming

Tel: +86 189 8829 4621
sales-kunming@banyantree.com

China – Shanghai

Tel: +86 21 6335 2929
Fax: +86 21 6335 0658
sales-shanghai@banyantree.com

China – Shenyang

Tel: +86 24 2318 8888
Fax: +86 24 2318 8888 ext 3057
sales-shenyang@banyantree.com

Hong Kong

Tel: +852 2247 8403
Fax: +852 2312 2317
sales-hongkong@banyantree.com

Japan & Korea

Tel: +81 3 5542 3511
Fax: +81 3 5542 3512
sales-tokyo@banyantree.com

Southeast Asia

Tel: +65 6849 5833
Fax: +65 6462 9800
sales-singapore@banyantree.com

Taiwan

Tel: +886 2 2509 2368
Fax: +886 2 2509 2286
sales-taiwan@banyantree.com

EUROPE

France

Tel: +33 1 42 25 96 65
Fax: +33 1 42 25 90 91
sales-paris@banyantree.com

Germany, Austria & Switzerland

Tel: +49 30 288 7329 11
Fax: +49 30 288 7329 29
sales-germany@banyantree.com

Russia

Tel: +7 965 35 10 226
sales-russia@banyantree.com

United Kingdom

Tel: +44 20 7874 1595
sales-london@banyantree.com

MIDDLE EAST

United Arab Emirates

Tel: +971 50 688 55 29
sales-dubai@banyantree.com

SOUTH ASIA

India

Tel: +91 11 4600 0560
sales-india@banyantree.com

**WORLDWIDE RESERVATIONS
TOLL-FREE NUMBERS**

AMERICAS

United States

Tel: 1 800 591 0439

Mexico

Tel: 001 888 213 4992

Other Countries

Tel: +1 407 284 4284

ASIA PACIFIC

Australia

Tel: 1800 050 019

China

Tel: 400 921 9789

Hong Kong

Tel: 800 903 881

Japan

Tel: 0120 778 187

Singapore

Tel: 1800 232 5599

Other Countries

Tel: +65 62325505

EUROPE

France

Tel: 00800 300 200 00

Germany

Tel: 00800 300 200 00

Spain

Tel: 00800 300 200 00

United Kingdom

Tel: 00800 300 200 00

Other Countries

Tel: +49 6966419608

MIDDLE EAST

United Arab Emirates

Tel: 800 065 0586