

WELCOME TO BANYAN TREE

SANCTUARY FOR THE SENSES

Banyan Tree Club & Spa Seoul



BANYAN TREE
— CLUB & SPA —
SEOUL

BANYANTREE.COM

THE HOTEL



NAMSAN POOL DELUXE ROOM & NAMSAN POOL PREMIER ROOM

The size of Namsan Pool Deluxe Room and Namsan Pool Premier Room ranges from 50m² to 70m². Only four rooms on each floor so, guests can enjoy perfect resting in a quiet atmosphere while simple interior design with beauty of space gives comfort. Seoul's stunning night view can be seen in the Relaxation Pool equipped in each room and no doubt you can achieve full satisfaction mentally and physically.



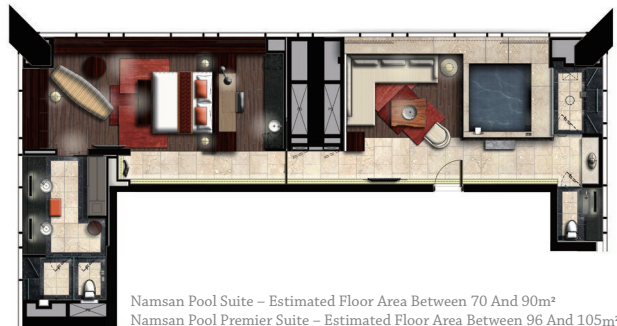
Namsan Pool Deluxe Room – Estimated Floor Area between 50 and 56m²
Namsan Pool Premier Room – Estimated Floor Area between 59 and 70m²

*All plans are not drawn to scale



NAMSAN POOL SUITE & NAMSAN POOL PREMIER SUITE

The Namsan Pool Suite and Namsan Pool Premier Suite, offered in sizes ranging from 70m² to 105m², feature separate living rooms and bedrooms, allowing a more spacious stay. The best view of Seoul characterized by Namsan Mountain and N Seoul Tower can be enjoyed from the large living room. The comfortable, cozy bedroom and the romantic Relaxation Pool further deepen the special experience in the Suite. Enjoy a quiet, comfortable stay in a private suite offered in only two locations on each floor.



Namsan Pool Suite – Estimated Floor Area Between 70 And 90m²
Namsan Pool Premier Suite – Estimated Floor Area Between 96 And 105m²

*All plans are not drawn to scale



SPA SANCTUARY SUITE

Take a break at Banyan Tree's Spa Sanctuary Suite and enjoy peaceful spa activities all day long. Stay in one of the two massive rooms occupying a single floor and explore ultimate tranquility and relaxation with various types of massages the hotel has to offer, Spa Sanctuary Suites offer unlimited spa treatment during spa operation hours at our Banyan Tree Spa, in-room check-in with welcome foot ritual and spa inspired turndown setups.



Spa Sanctuary Suite – Estimated Floor Area Between 70 And 90m²

*All plans are not drawn to scale



PRESIDENTIAL SUITE

Namsan Presidential Suite and Banyan Presidential Suite are the best rooms you can experience the panoramic view of Seoul with magnificent sight of Namsan. It has 300m² space and it is duplex type which is divided into two spaces, one is common use space with dining, living room and Relaxation Pool and the other is a bedroom with two beds. You can spend wonderful time watching the Namsan scenery in Namsan Presidential Suite or the downtown view of Seoul in Banyan Presidential Suite.



Namsan Presidential Suite – Estimated Floor Area 315m²

Banyan Presidential Suite – Estimated Floor Area 279m²

*All plans are not drawn to scale

THE CLUB



BANYAN ROOM & BANYAN POOL DELUXE ROOM

16 Club rooms are located at Club building with the view of downtown. There are three kinds of rooms, Banyan Room, Banyan Pool Deluxe Room, Banyan Suite and will be a good place to enjoy time with lovers, friends and family. Relaxation Pool in Banyan Pool Deluxe Room completes the resting space perfectly. Naturalistic interior design in each room will also offer you psychological stability.



Banyan Room – Estimated Floor Area Between 49 And 59m²



Banyan Pool Deluxe Room – Estimated Floor Area Between 48 And 64m²

*All plans are not drawn to scale



BANYAN SUITE

Banyan Suite is about 77m² with a king sized bed and bathtub in the bathroom equipped. Banyan Suite is spacious living area and bed room and located on 6th floor in Club building. Each Club category features complimentary WIFI, shoeshine service, turn down service and breakfast at Granum Dining Lounge.



Banyan Suite – Estimated Floor Area between 76 and 77m²

*All plans are not drawn to scale

For reservations and enquiries, please contact

Banyan Tree Club & Spa Seoul

Jang Chung Dan-Ro 60, Jung-Gu,
Seoul 04605, Korea
Tel: +82 2 2250 8000
Fax: +82 2 2250 8009
clubandspa-seoul@banyantree.com

CORPORATE OFFICE

Banyan Tree Hotels and Resorts

Group Marketing Services
211 Upper Bukit Timah Road
Singapore 588182
Tel: +65 6849 5888
Fax: +65 6462 2800
corporate@banyantree.com

WORLDWIDE SALES

AMERICAS

United States – Los Angeles

Tel: +1 805 212 8148
sales-losangeles@banyantree.com

United States – New York

Tel: +1 917 213 0193
Fax: +1 718 889 2416
sales-newyork@banyantree.com

ASIA PACIFIC

Australia

Tel: +61 2 9411 5576
Fax: +61 2 9279 0780
sales-sydney@banyantree.com

China - Beijing

Tel: +86 10 8515 1828
Fax: +86 10 8587 0308
sales-beijing@banyantree.com

China - Chengdu

Tel: +86 28 6606 7133
sales-chengdu@banyantree.com

China - Guangzhou

Tel: +86 20 2826 1896
Fax: +86 20 2826 1897
sales-guangzhou@banyantree.com

China - Kunming

Tel: +86 189 8829 4621
sales-kunming@banyantree.com

China - Shanghai

Tel: +86 21 6335 2929
Fax: +86 21 6335 0658
sales-shanghai@banyantree.com

China - Shenyang

Tel: +86 24 2318 8888
Fax: +86 24 2318 8888 ext 3057
sales-shenyang@banyantree.com

Hong Kong

Tel: +852 2247 8403
Fax: +852 2312 2317
sales-hongkong@banyantree.com

Japan & Korea

Tel: +81 3 5542 3511
Fax: +81 3 5542 3512
sales-tokyo@banyantree.com

Southeast Asia

Tel: +65 6849 5833
Fax: +65 6462 9800
sales-singapore@banyantree.com

Taiwan

Tel: +886 2 2509 2368
Fax: +886 2 2509 2286
sales-taiwan@banyantree.com

EUROPE

France

Tel: +33 1 42 25 96 65
Fax: +33 1 42 25 90 91
sales-paris@banyantree.com

Germany, Austria & Switzerland

Tel: +49 30 288 7329 11
Fax: +49 30 288 7329 29
sales-germany@banyantree.com

Russia

Tel: +7 965 35 10 226
sales-russia@banyantree.com

United Kingdom

Tel: +44 20 7874 1595
sales-london@banyantree.com

MIDDLE EAST

United Arab Emirates

Tel: +971 50 688 55 29
sales-dubai@banyantree.com

SOUTH ASIA

India

Tel: +91 11 4600 0560
sales-india@banyantree.com

**WORLDWIDE
RESERVATIONS
TOLL-FREE NUMBERS**

AMERICAS

United States

Tel: 1 800 591 0439

Mexico

Tel: 001 888 213 4992

Other Countries

Tel: +1 407 284 4284

ASIA PACIFIC

Australia

Tel: 1800 050 019

China

Tel: 400 921 9789

Hong Kong

Tel: 800 903 881

Japan

Tel: 0120 778 187

Singapore

Tel: 1800 232 5599

Other Countries

Tel: +65 62325505

EUROPE

France

Tel: 00800 300 200 00

Germany

Tel: 00800 300 200 00

Spain

Tel: 00800 300 200 00

United Kingdom

Tel: 00800 300 200 00

Other Countries

Tel: +49 6966419608

MIDDLE EAST

United Arab Emirates

Tel: 800 065 0586

WELCOME TO BANYAN TREE

Located in the tranquil Namsan district – an hour's drive from Incheon International Airport and just 10 minutes from downtown Seoul – overlooking Seoul's picturesque Mountain Namsan, Banyan Tree Club & Spa Seoul is Banyan Tree's first urban resort hotel in Korea. This urban oasis offers guests a chance to escape the city's fast pace, and to relax with family and friends amidst a serene and lush environment.



Facilities

The Oasis (Ice Rink in winter season) | Fitness Club |
Indoor Swimming Pool | Sauna | Kids Club | Troon Golf | Tennis Court |
Futsal Field | Basketball Court | Banyan Tree Spa | Banyan Tree Gallery

Dining Facilities

Granum Dining Lounge | The Club Member's Restaurant |
The Festa Bistro & Bar | Oasis Restaurant | Moon Bar

Banquet & Wedding

Crystal Ballroom | Boardroom | Namsan Terrace & Celeste | MoriN

An hour's drive from Incheon International Airport
● Banyan Tree Club & Spa Seoul ✦ Airport

