







# BANQUET ROOM INFORMATION

## 연회장 시설 안내

| Name of Room     | <br>Banquet Round | <br>Theater Style | <br>Classroom | <br>Cocktail Reception | <br>U-shape | <br>Floor |
|------------------|--|---|--|---|--|--|
| CRYSTAL BALLROOM | 250  | 350   | 144  | 300   | 50   | The Hotel 1F   |
| BOARD ROOM       | -  | -   | -  | -   | 13   | The Hotel 2F   |
| NAMSAN TERRACE   | 150  | -   | -  | 200   | -  | The Hotel 3F   |
| CELESTE          | 80   | -   | -  | 100   | -  | The Hotel 3F   |
| FESTA HALL       | 100  | 100   | 72   | 100   | 35   | The Festa 2F   |
| OASIS            | 350  | -   | -  | -   | -  | Outdoor  |

\* 상기 인원은 최대 수용 가능 인원이며 행사 성격 및 레이아웃 형태에 따라 달라질 수 있습니다.

\* The numbers above are the maximum capacity and may vary depending on the event purpose and layout.

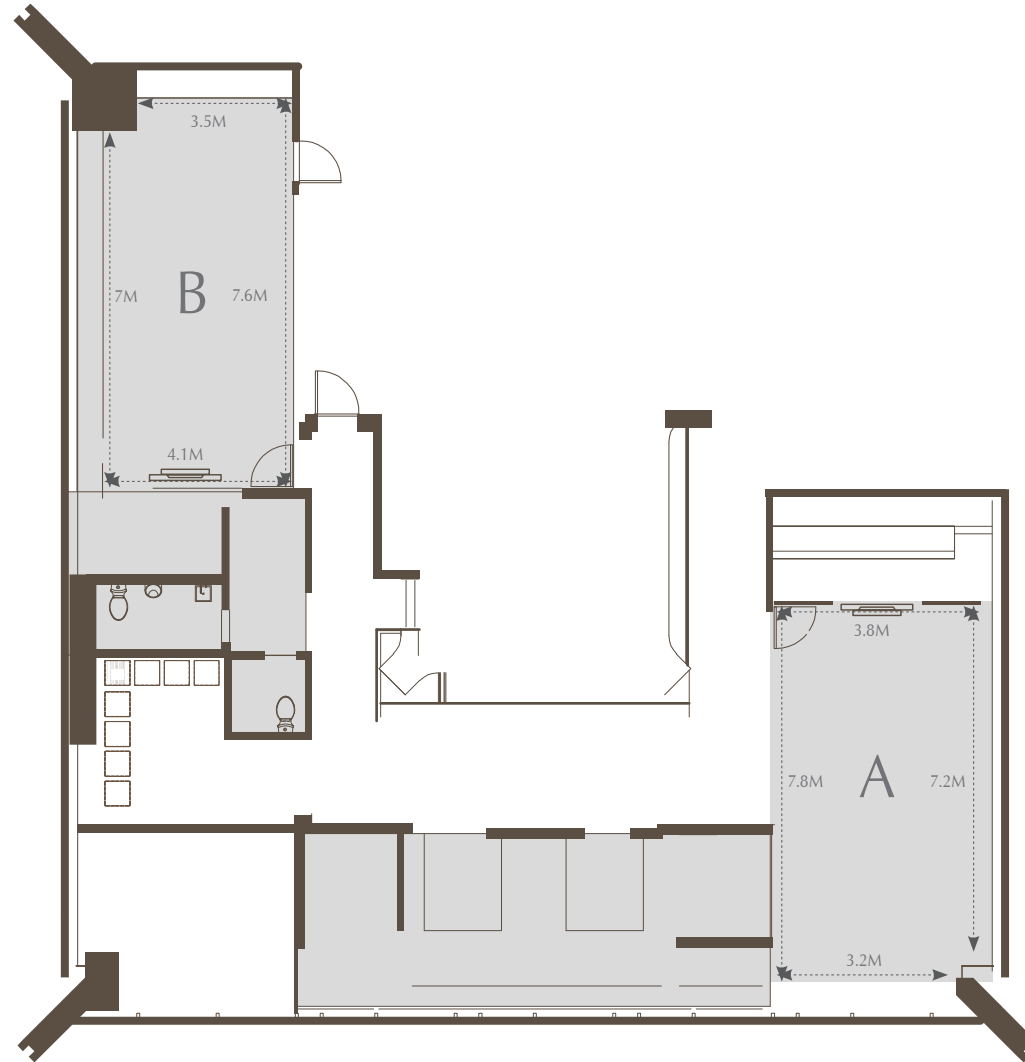
# The Hotel - Crystal Ballroom 1F

|              |                    | Crystal Ballroom | Crystal Ballroom I | Crystal Ballroom II |
|--------------|--------------------|------------------|--------------------|---------------------|
| Space (Sq.M) |                    | 490              | 250                | 160                 |
| Height (M)   | Ceiling Decoration | 3.4 - 3.9        |                    |                     |
|              | Ceiling            | 5.2              |                    |                     |
| Capacity     | Banquet Round      | 250              | 100                | 90                  |
|              | Classroom          | 144              | 100                | 90                  |
|              | Reception          | 300              | 200                | 100                 |



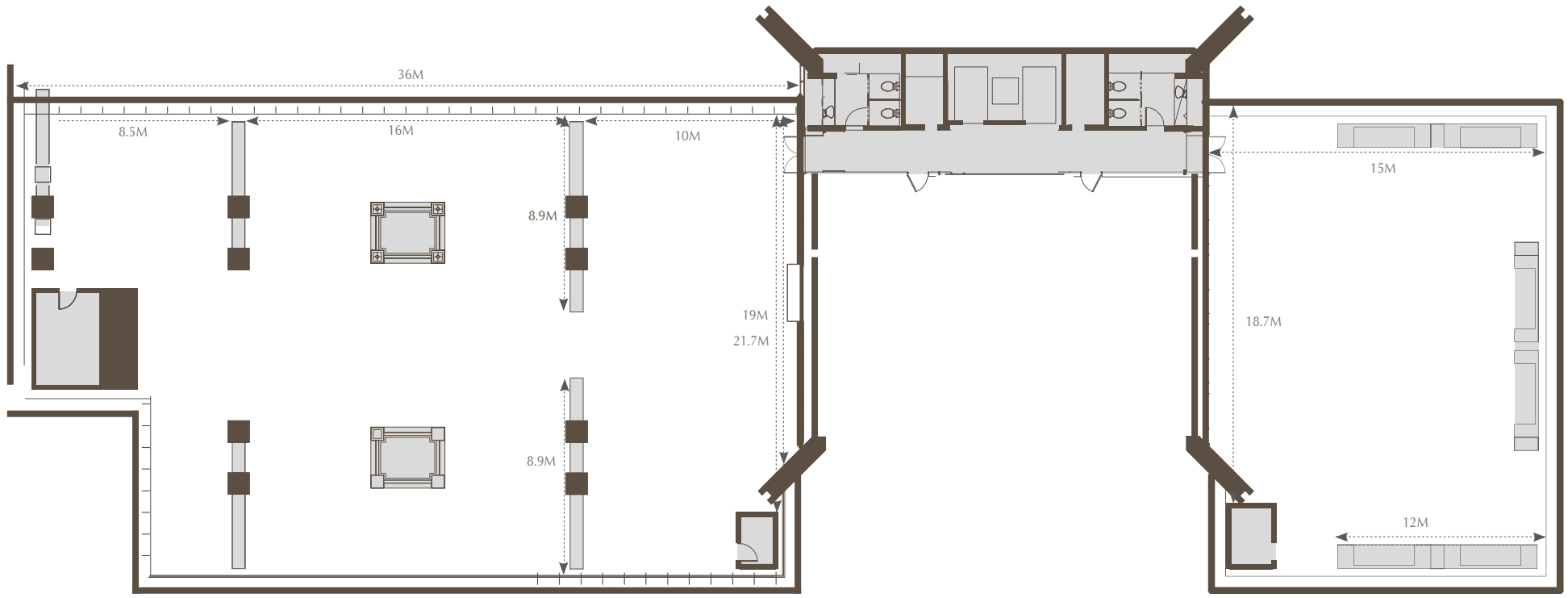
# The Hotel - Boardroom 2F

|              | Boardroom A | Boardroom B |
|--------------|-------------|-------------|
| Space (Sq.M) | 34          | 30          |
| Capacity     | 13          | 13          |



# The Hotel 3F

|              |               | Namsan Terrace | Celeste |
|--------------|---------------|----------------|---------|
| Space (Sq.M) |               | 780            | 303     |
| Capacity     | Banquet Round | 150            | 80      |
|              | Reception     | 200            | 100     |

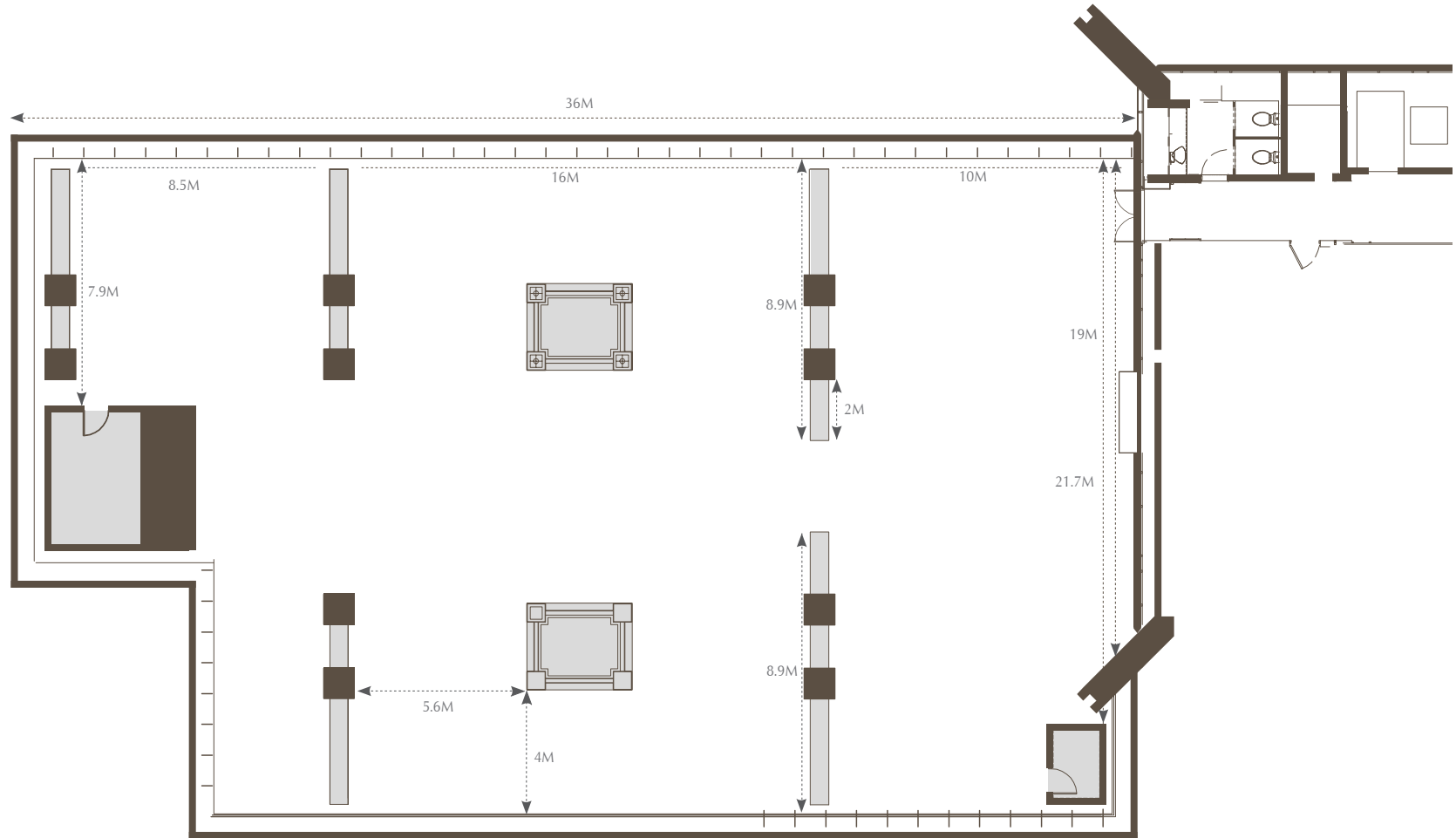


Namsan Terrace

Celeste

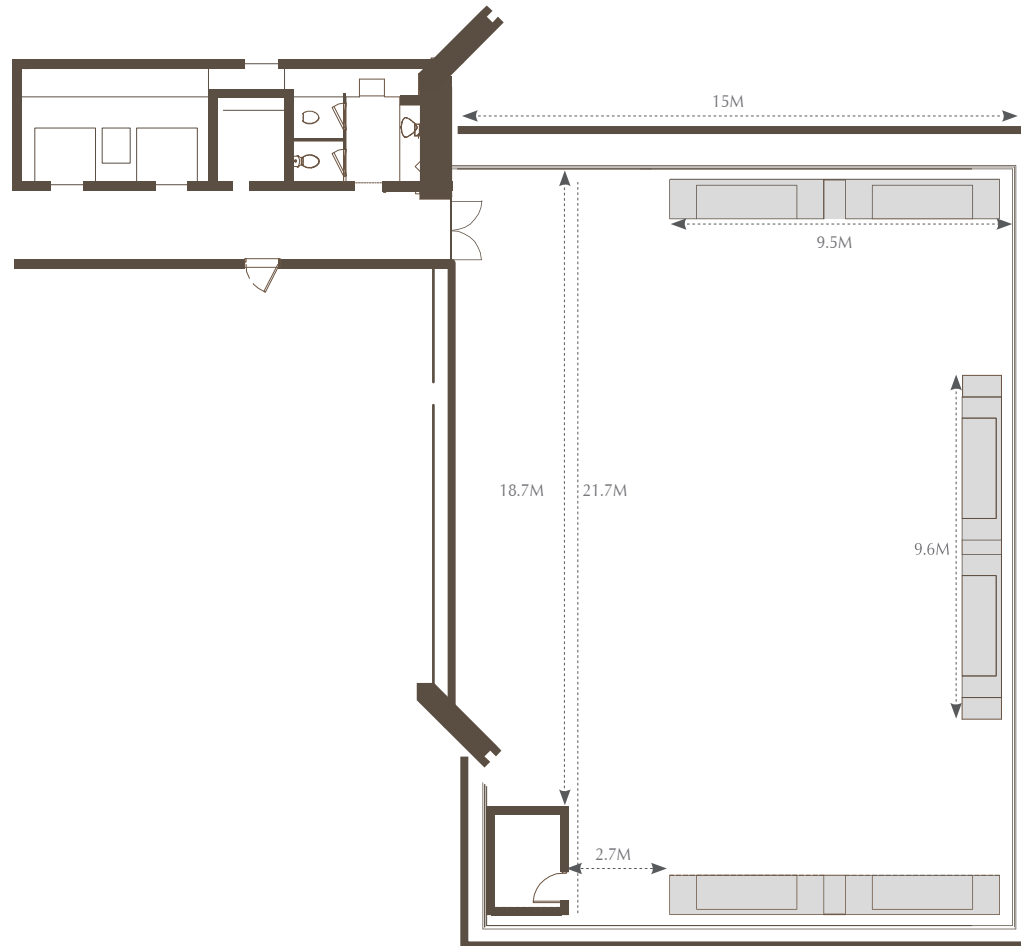
# The Hotel - Namsan Terrace 3F

| Namsan Terrace | Space (Sq.M) | Capacity      |           |
|----------------|--------------|---------------|-----------|
|                |              | Banquet Round | Reception |
|                | 780          | 150           | 200       |



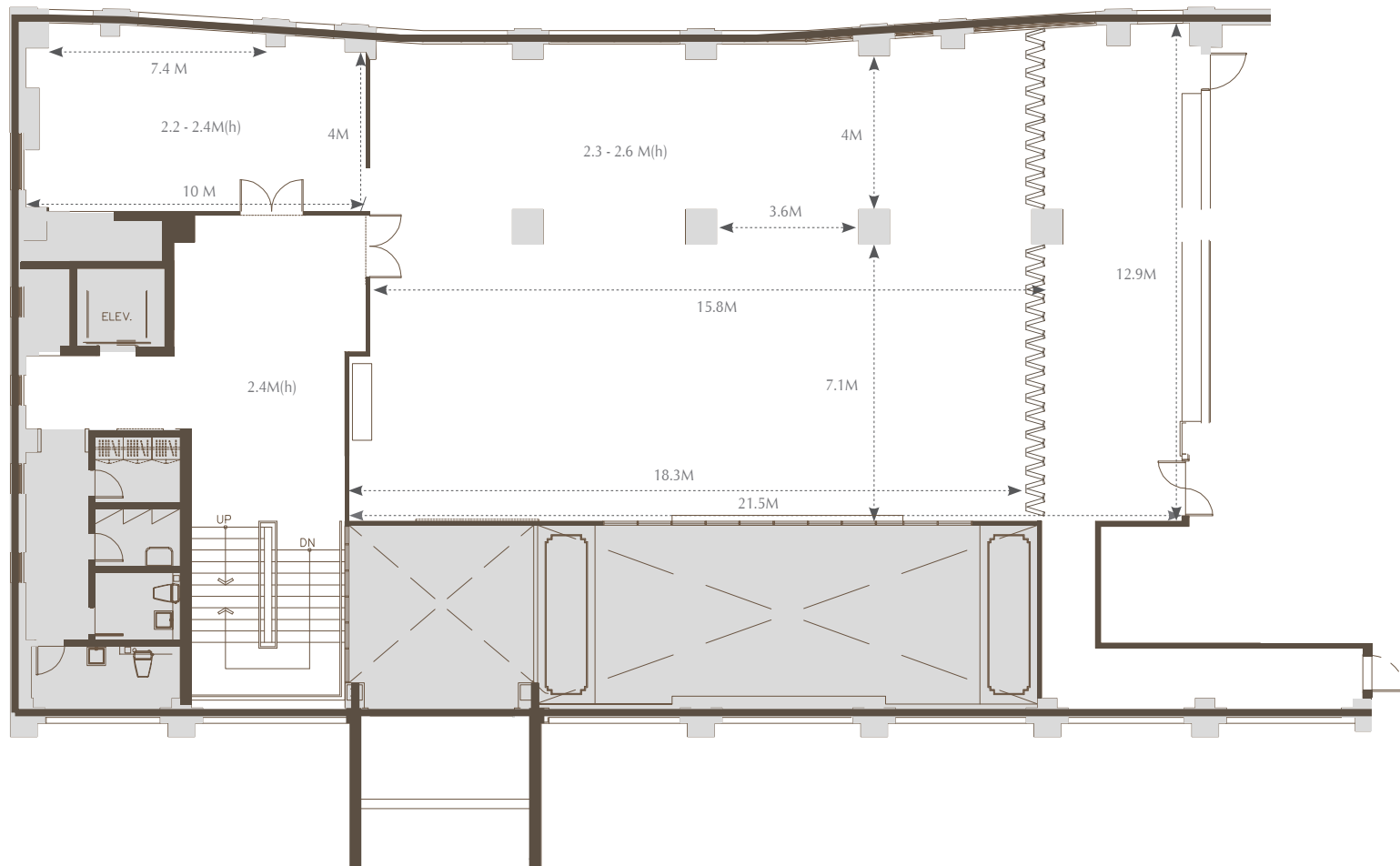
# The Hotel - Celeste 3F

| Celeste | Space (Sq.M) | Capacity      |           |
|---------|--------------|---------------|-----------|
|         |              | Banquet Round | Reception |
|         | 303          | 80            | 100       |



# The Festa - FESTA HALL 2F

|              |               | Festa Hall 2 F |
|--------------|---------------|----------------|
| Space (Sq.M) |               | 225.7          |
| Height (M)   |               | 2.3 - 2.6      |
| Capacity     | Banquet Round | 100            |
|              | Classroom     | 72             |
|              | Reception     | 100            |

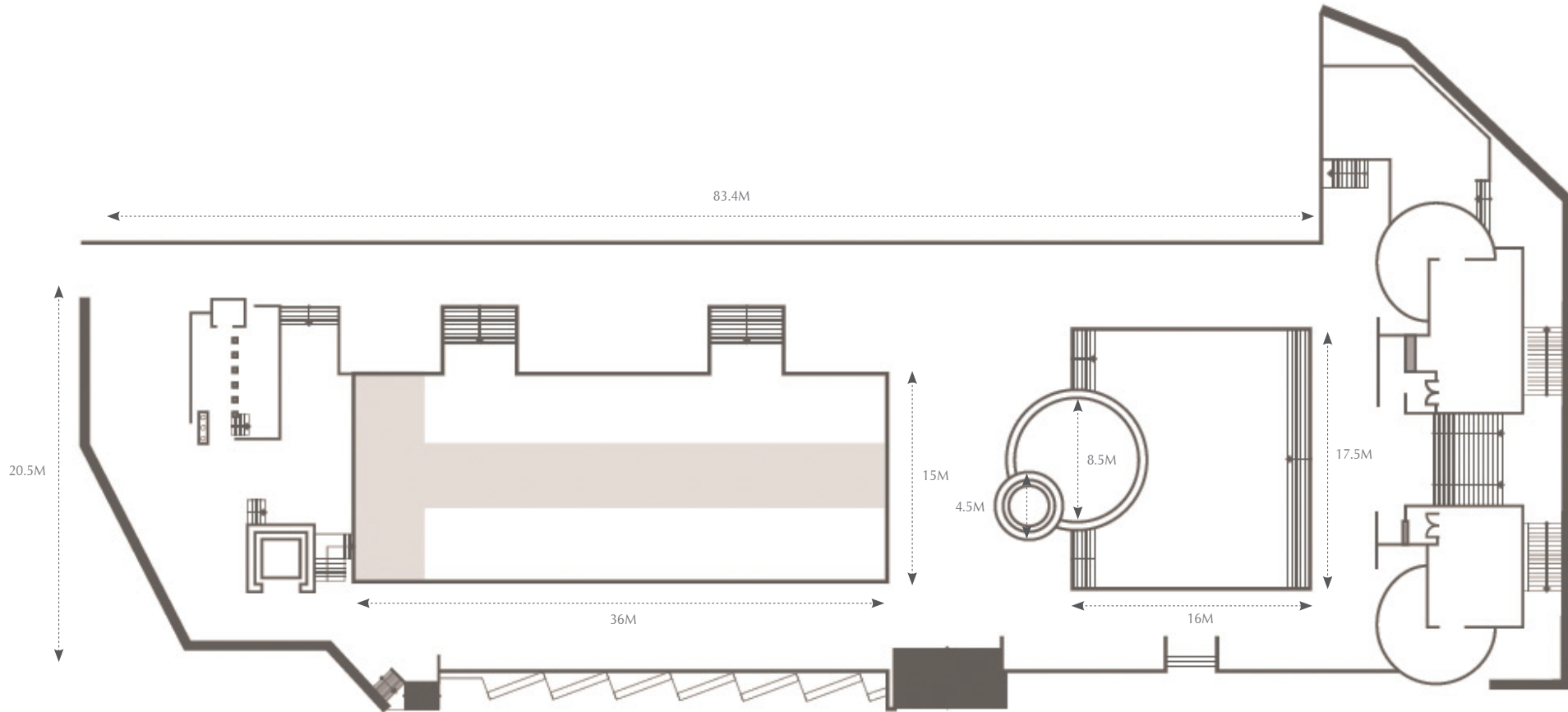


# The Oasis

Capacity

Banquet Round

350





# The Festa - FESTA Rooftop Bar 3F

Capacity

72

